

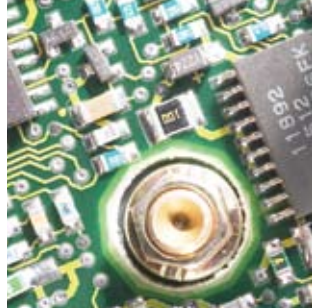
ENVIRONMENTAL RECORDERS



ShockWatch Environmental Recorders are portable data loggers that monitor and record temperature and humidity for products in transportation and storage. Data collected can be used to graphically analyze environmental conditions.

DataScribe RH52: This device monitors and records temperature and humidity through a linear dual channel.

DataScribe Jr.: This device monitors and records temperature through a single linear channel using either an internal or external sensor. It is available with optional remote sensors that can monitor extreme temperature environments such as freezers, heating ducts, and climate-controlled environments.



Use Environmental Recorders on:

- Biomedical and pharmaceutical products
- Photographic chemicals and supplies
- Perishable food products
- Sensitive electronics
- Agricultural plants
- Wood products
- Paper products
- Ammunition
- Livestock
- And much more

■ Benefits

- Reduces product damage and loss from shipping, handling, and storage
- Provides ongoing record of unacceptable exposure, including precise time and date
- Protects the quality and integrity of products
- Encourages adherence to product storage and handling temperature guidelines
- Ensures safety and health compliance
- Ensures chain of accountability in storage and transportation
- Identifies potential product quality problems before delivery to end-user
- Protects against/reduces warranty claims
- Pinpoints trouble spots in storage and transportation
- Enables control of energy costs
- Increases customer satisfaction and provides a visible marketing edge

ENVIRONMENTAL RECORDERS

■ Features

- Programmable to begin operation at a future date and time
- Date and time stamp for alarms
- Large data memory size — 64kB (RH52) and 32kB (Jr.)
- Precision temperature sensor
- Visible status alert to indicate normal operation (green LED) and alarm conditions (red LED)
- Fast data retrieval does not interrupt recording operation
- No delay after set-up
- Memory and set-up are saved even upon battery removal
- Unaffected by saturation and most chemicals through a thin-film polymer capacitive IC (RH52)
- Pocket-portable
- Rugged construction built to withstand harsh field conditions
- Extended battery life
- CE and FCC certified

■ Accessories



DataScribe Transporter: A pocket-portable solution to managing up to 32 DataScribe units.

This document contains trademarks and registered trademarks of Media Recovery, Inc. in the United States of America. This document contains text and graphics that are individually protected by copyright.

■ DataScribe RH52 Specifications

Sensors

Precision-integrated circuit (temperature)
Thin-film polymer capacitive IC (humidity)

Operating Range

-30°F/-34°C to +150°F/+66°C
0–100% RH

Accuracy

+/-0.5°F (temperature)
+/-3% (humidity)
+/-5 sec/day (clock)

Temperature Resolution

+0.1°F

Humidity Resolution

0.5%

Intervals

1 to 1440 minutes

Memory

64,000 samples

Battery

9V alkaline (9 months)
U9VL lithium (2 years)

Enclosure

Splash-proof ABS, 4.2"/106.68mm x
2.4"/60.96mm x 0.9"/22.86mm

Weight

5 oz/141.75g

Alarms

High/Low limits exceeded
Pass/Fail alarm indicator

■ DataScribe Jr. Specifications

Sensor

Precision-integrated circuit

Operating Range

-30°F/-34°C to +150°F/+66°C
(-40°F/-40°C to +257°F/+125°C
with remote sensor)

Accuracy

+/-0.5°F (temperature)
+/-5 sec/day (clock)

Temperature Resolution

+0.5°F

Intervals

1 to 1440 minutes

Memory

32,000 samples

Battery

9V alkaline (1 year)
U9VL lithium (2–3 years)

Enclosure

Splash-proof ABS, 4.2"/106.68mm x
2.4"/60.96mm x 0.9"/22.86mm

Weight

5 oz/141.75g

Alarms

High/Low limits exceeded

Response Time in Still Air

10 minutes to 98% (internal sensor)
1 minute to 98% (remote sensor)

■ Software

The proprietary WinDataSoft Software is used to calibrate the DataScribes and download data. Data collected from the DataScribe products can be downloaded and used for graphical analyses and mathematical calculations such as: Permanance Ratio, Mildew Index, and Mean Kinetic Temperature.

SHOCKWATCH®

DAMAGE PREVENTION. WE'RE ON IT.

1111 W. Mockingbird Lane, Suite 1050 | Dallas, Texas 75247

800.527.9497 | Fax 214.638.4512 | info@shockwatch.com

www.shockwatch.com

Your Authorized Representative