

NETLON®

INDUSTRIAL PRODUCTS

*providing solutions in
thermoplastic mesh & net*



products for...

Protection

Reinforcement

Separation

Filtration

Support

Decoration

NETLON®

INDUSTRIAL PRODUCTS

For nearly half a century Netlon Industrial Products has been providing innovative solutions to problems faced by a vast range of industries by adapting and developing our unique range of thermoplastic meshes and nets.

Industries as varied as fish farming and wine making, bra moulding and power generation, automotive and sanitaryware have benefited from our expertise.

Any industry that has a requirement for product protection, reinforcement, support, separation or even just decoration will find the answer in our range - and if it isn't already there our in-house team of engineers and designers will develop the right solution.



This "solution-provider" approach has in fact produced most of the products we now offer - resulting in over 450 patents world wide.

Our products are inherently versatile -

- Flat or tubular Straight or curved
 - Inert and resistant to chemicals
 - Totally formable Incredibly strong
 - Lightweight. UV stable
-and very competitively priced

protection

Protective mesh sleeves which are easy to apply and hug the shape of the product/component. Ideal for shielding delicate objects through manufacture, storage, transport....and because the product is also decorative it can be used right through to retail.

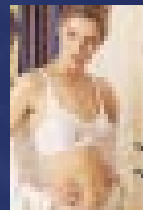
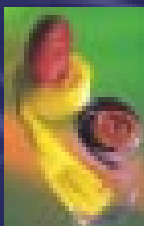
Sleeves are available in a standard range of colour coded sizes, but can be manufactured to meet specific requirements.

Protective mesh can also be supplied in flat sheet form and heavyweight mesh is an ideal "separator" and "protector" of engineered components stored and transported in stillages.

reinforcement

Strength and formability makes Netlon mesh the ideal reinforcement media for a wide range of consumer and industrial products.

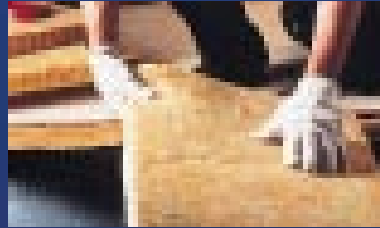
The open "weave" means that other materials can be formed through and round it to create the final product. Mesh is used as reinforcement in everything from bras to parcel shelves for cars.



support

Inherent strength and light weight means that Netlon mesh is widely used in the construction industry to hold or support under-ceiling and soffit insulation and similar products.

Products/components transported by air, sea, road and rail are also supported and protected by Netlon mesh.

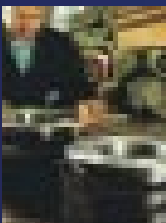


separation

Mesh and nets are used in industries as diverse as fish farming, food processing and power generation.

Easy to install and requiring very little maintenance Netlon meshes are normally inert and resistant to chemicals making them the ideal choice in many industrial, processing and chemical applications.

Products are available in a range of sizes and qualities to suit individual applications and can be manufactured to meet precise requirements



decoration

Netlon meshes and nets are supplied in a variety of attractive colours (with virtually any colour being available subject to minimum order), textured finishes and aperture sizes. They are often used to help improve the aesthetic appeal of a product and "add value" - particularly in retail environments.

The application of Netlon meshes is virtually limitless. They are, for example, used to create the "exfoliators" which hang in showers throughout the world and, pre-treated with biocides, as safe and healthy bar mats in pub and clubs.

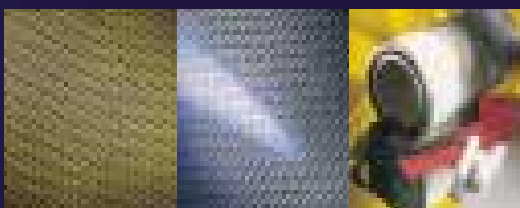


filtration *decoration*

filtration

Netlon mesh offers a tough, lightweight, corrosion resistant and very flexible alternative to metal in the manufacture of filters for a wide variety of applications.

The range includes filter meshes, filter sleeves and rigid tubes (for the cores of wound or pleated elements) in a wide variety of configurations. Unlike metal components Netlon's plastic elements can be easily disposed of via incineration.





INDUSTRIAL PRODUCTS

tech support

Complete technical consultation and design service

Netlon Industrial Products is a problem-solving organisation. Our team of field-based consultants and in-house designers are happy to work with any business to provide a tailor-made, competitively-priced solution to its specific problem or requirement.

The design service is backed by the UK's leading mesh manufacturing resource, with the capability to extrude a wide range of polymers to meet the precise needs of customers.

If you have a problem you think we can help with, we'd be delighted to help provide the solution.



The information contained herein is given in good faith, but no liability will be accepted in relation to same.

The revision of products, pursuant to Netlon Limited's policy of continuous development, as well as the acquisition of further information, may necessitate revisions to parts or all of this document. Netlon Limited's Customer Service department will be pleased to update customers, on request. As the company's products are used for a multiplicity of purposes, and as Netlon Limited has no control over the method of their application or use, Netlon Limited must exclude all conditions or warranties, express or implied, as to their products and/or fitness for any particular purpose. Any technical co-operation between the Company and its customers is given for the customers assistance only, and without liability on the part of Netlon Limited.

Netlon® and Tensar® are the registered trademarks of Netlon Limited in the UK and other countries.

Netlon Limited is part of The Netlon Group Limited.



Netlon Limited (Industrial Division)

New Wellington Street,
Blackburn, Lancashire
England BB2 4PJ

Tel: +44 (0) 1254 262431

Fax: +44 (0) 12543 692817

E-mail: industrial@netlon.co.uk